

**Henry Avenue Bridge Over The Wissahickon Creek  
Philadelphia, Pennsylvania**

**PROJECT DESCRIPTION: Concrete & Steel Repairs, & Blasting & Painting Project**



**Stone Faced Concrete Arch Bridge**



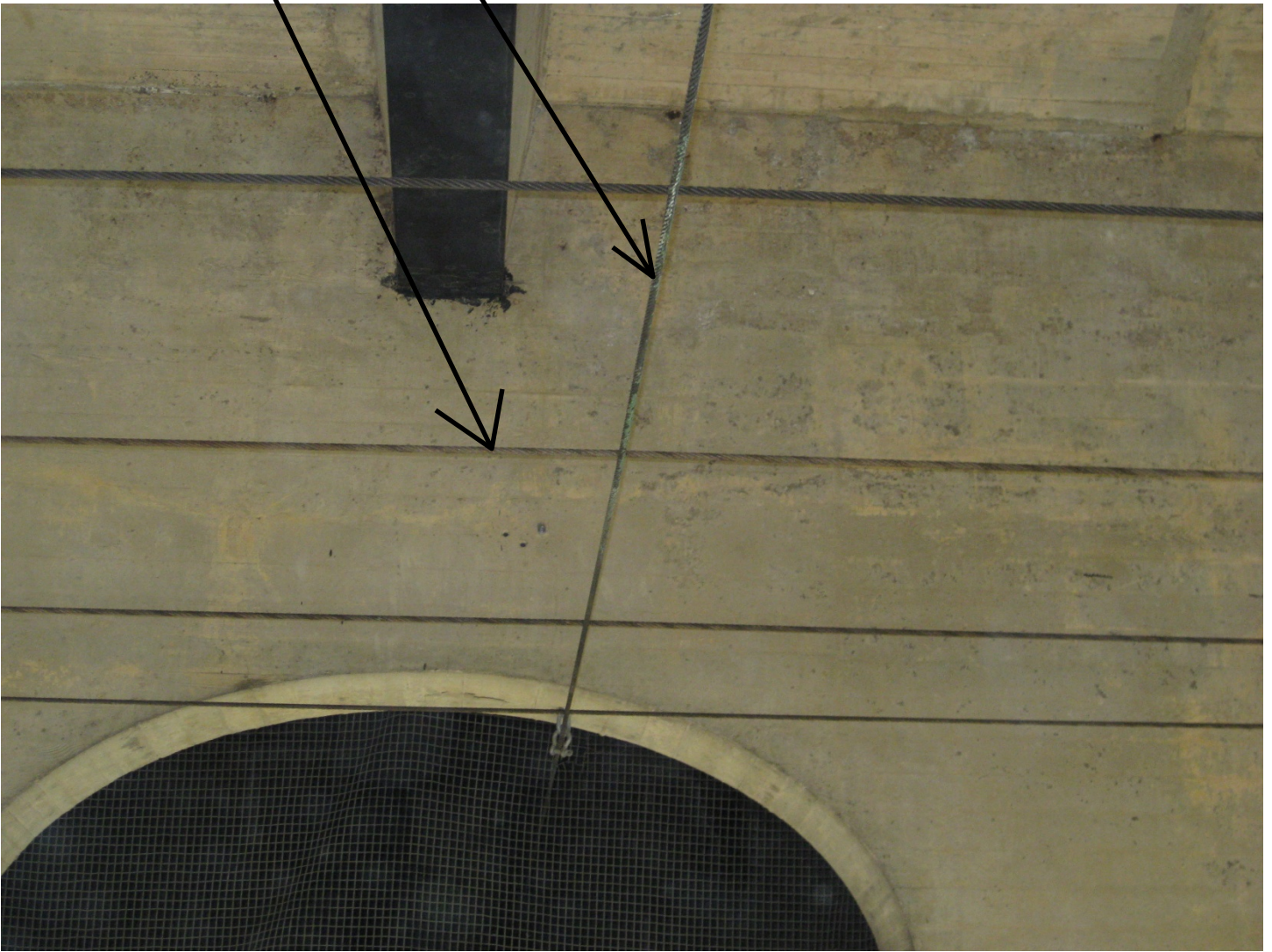
**Center Cable/Metal Deck Platform Below Upper Roadway**



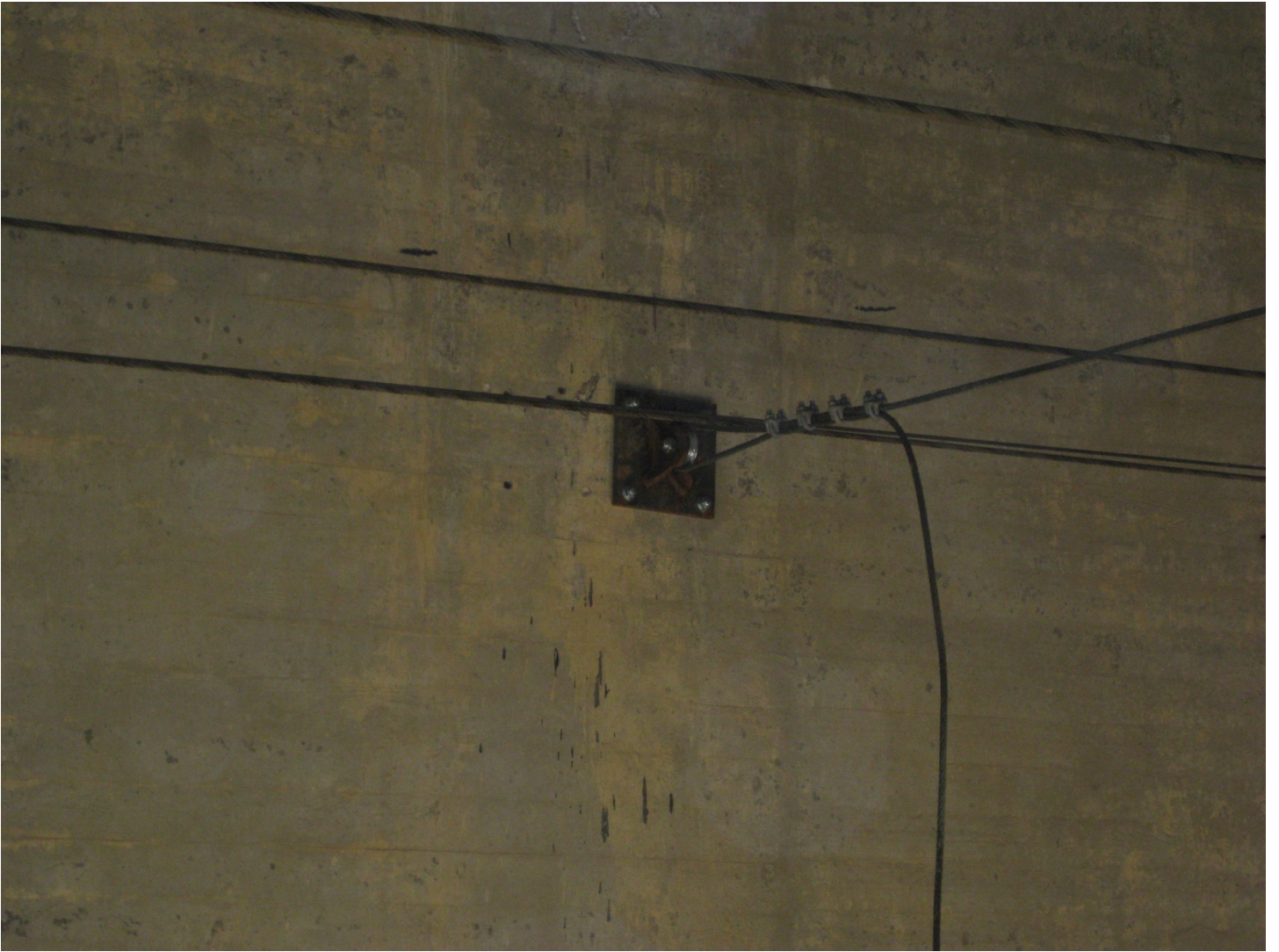
**Center Cable/Metal Deck Platform Below Upper Roadway**

**Main Cables**

**Transverse Cables**



**Mian Longitudinal Cables & Transverse Support Cables**



**Anchor Plate End Support Assembly Transverse Cables**



**Anchor Plate End Support Assembly Main Cables**



**Cable/Metal Deck Platform Below Upper Roadway And Containment in The Background**



**Cable/Metal Deck Platform Below Upper Roadway And Containment in The Background**





**Cable/Metal Deck Platform And Containment Floor**



**Intermediate Beam Flange Clamp Hanger Tie Up Cable Support Assembly**



**Cable Supported Staging Access Left & Right of Center Platform**



**Cable Supported Staging Access Left & Right of Center Platform  
w/ Side Containment & End Containment In The Background**